

CONSTRUCTION INSPECTION

The Highest Standard.



CONSTRUCTION INSPECTION

At KC Engineering and Land Surveying, P.C. (KC), our interdisciplinary team delivers responsible solutions tailored to each client's specific needs.

KC's construction inspection team consistently delivers high-quality projects on time and within budget by prioritizing safety, quality control, and cost management in every phase of construction.

What sets KC apart is our seamless integration of field and office support. Every field team is backed by a dedicated group of in-office professionals who provide real-time assistance, ensuring that inspectors and engineers in the field receive the most up-to-date information aligned with current standards, regulations, and client expectations. This collaborative structure allows us to resolve issues quickly and maintain consistent project momentum.

In addition, KC emphasizes continuous learning and client-specific alignment. Our team undergoes regular training and is thoroughly briefed at the start of each new project to ensure a clear understanding of the client's goals, project requirements, and quality expectations.

With a deep understanding of the engineering and architectural design processes, KC provides exceptional service across all stages of construction. All of our inspectors are OSHA-certified and maintain current credentials that meet or exceed industry standards.

Whether supplementing a client's in-house staff or providing a full on-site inspection team, KC offers the expertise required for a successful field program.

KC's construction inspection group includes construction managers, resident engineers, skilled senior and junior inspectors, and office, traffic, civil, and structural engineers. This comprehensive team ensures code and contract compliance, performs detailed cost preparation and reviews, and produces thorough and accurate documentation from project initiation through closeout.

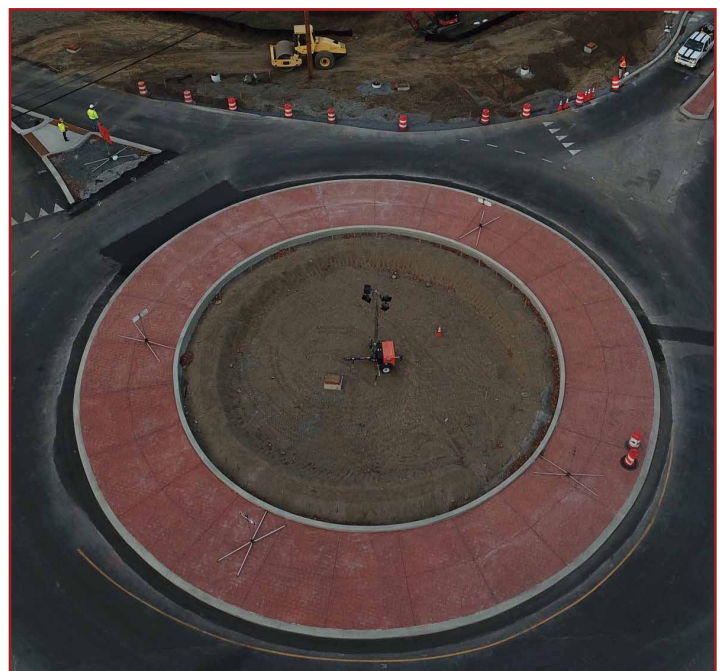
Services

- As-Built Drawing Preparation
- Bid Analysis & Evaluation
- Change Order Review, Preparation, & Negotiation
- Claims Review & Resolution
- Community Liaising & Public Outreach
- Constructability Review
- Construction Inspection & Management
- Construction Materials Review
- Construction Support Services
- Cost Estimating
- Design Standards & Code Compliance Review
- Document Control & Management
- Environmental Compliance Monitoring
- Maintenance & Protection of Traffic Plans
- Monitoring Lane Closure Durations
- Office Engineering & Record Keeping
- Permitting Assistance & Regulatory Coordination
- Progress Reporting & Project Closeout
- Quality Assurance & Quality Control
- Resident Engineering
- Review of Shop Drawings
- Safety Compliance Oversight
- Scheduling & CPM Analysis
- Traffic Engineering & Congestion Mitigation
- Utility Coordination



NYS DOT Contract D041169: Construction Inspection Services for Route 376 at Hooker Avenue Intersection Improvements, Dutchess County, NY

| The project scope includes the construction inspection services required for improvements to the signalized intersection of Route 376 at Hooker Avenue and New Hackensack Road, which also includes construction of a modern roundabout to replace an existing signalized intersection and pedestrian improvements at the intersection and along the Hooker Avenue approach, including new buffered sidewalks and crosswalks with pedestrian refuge islands. The project will improve air quality by mitigating congestion while improving safety, overall intersection operations, streetscapes, and roadway cross-sections. KC is inspecting all construction work on this project. Through routine inspection reports and progress assessments, KC ensures that project elements are built to withstand local environmental conditions and meet safety standards, thereby minimizing future maintenance issues.



Culvert and Drainage Improvements, Blooming Grove, NY | KC provided architectural and engineering design, bid phase, and construction administration and support services for the replacement of an undersized culvert. During construction, KC performed full-time inspection in accordance with the NYSDOT Highway Work Permit to ensure that culvert installation conformed with approved plans and generally accepted standards, which included tracking daily quantities, maintaining project records, managing change orders, preparing as-built drawings, and completing project closeout and punch list items.



We provide comprehensive construction inspection & management services on projects key to the region's infrastructure.

MTA Design-Build Contract A31740: Americans with Disabilities Act (ADA) Upgrades at 13 Stations Package 3 Design-Build, New York, NY

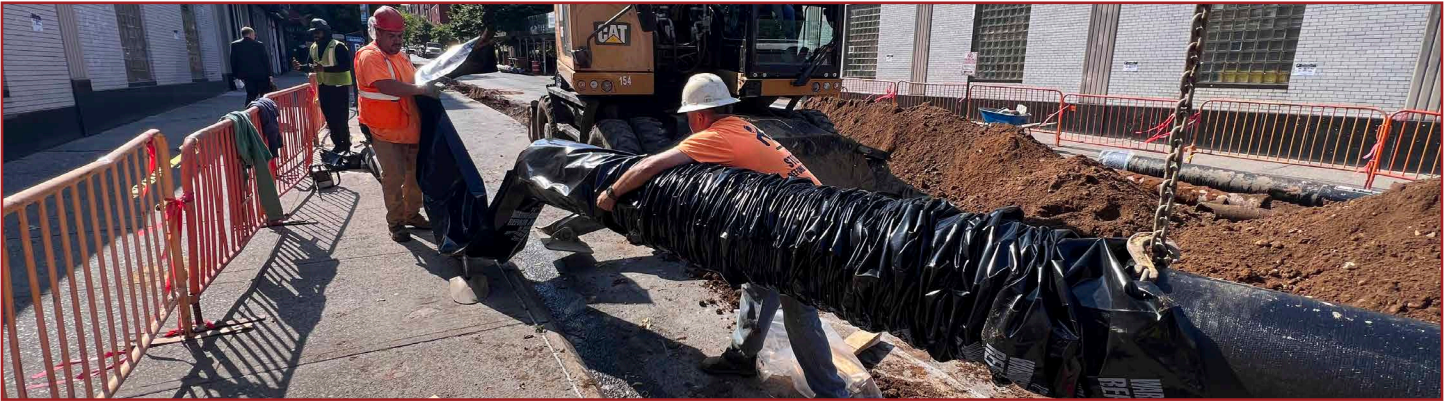
| The project scope includes the implementation of station accessibility improvements in accordance with ADA regulations at 13 subway stations. As the Independent Quality Firm (IQF), KC is responsible for providing quality assurance (QA) oversight for construction and initial design stages, which includes reviewing the Developer's Quality Management Plan (QMP) and providing suggestions for revision; performing on-site field inspections to oversee and ensure implementation of proper construction quality control (QC) means and methods; and performing periodic quality audits.



PANYNJ Design-Build Contract 70151: JFK Airport Central Substation #2 Design-Build, New York, NY

| The scope of work for this design-build project includes the development of a new two-story, single-building 40MVA substation and all associated components on an approximately 81,065-square-foot (SF) site. KC serves as Quality Manager and Construction QC Manager / Resident Engineer for this design-build project and is responsible for protecting and safeguarding the interests and objectives of the PANYNJ. KC oversees design unit deliverables and supervises quarterly audits. Additionally, KC verifies that site activities are performed in accordance with quality requirements; plans and directs the activities of inspection and testing personnel; monitors the quality of materials, workmanship, and construction; maintains records of satisfactory completion of site activities, equipment, material acceptability, and personnel qualifications; conducts thorough on-site inspections and proactively identifies any contract deviations prior to installation activities; issues nonconformance reports (NCRs); and recommends and enforces changes to construction means and methods.





NYCDDC Contract HWCQR05B: Resident Engineering Inspection Services for Distribution Water Main Work in Ellwell Crescent, New York, NY | The project scope included the replacement of approximately 19,100 linear feet (LF) of distribution water main in Ellwell Crescent from Alderton Street to Carlton Street and other locations in New York, NY. One location was in proximity to the MTA subway line along Queens Boulevard. KC provided inspection staff, including a

Resident Engineer, Office Engineer, Senior Inspector, two Inspectors, and the Community Construction Liaison, who performed pre-construction, construction, and post-construction services throughout the duration of the project. KC's scope included all services required for the inspection, management, coordination, and administration of the project from commencement through substantial completion, final acceptance, and project closeout.

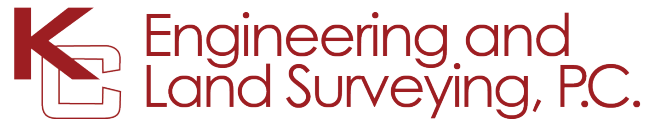


NYSDOT Contract D037956: Bridge Rehabilitation of Route 9 Over Wappinger Lake, Dutchess County, NY | This bridge rehabilitation project involved a complete replacement of a 213-foot double-span reinforced concrete beam structure. The new bridge has 11 metalized steel girders, new bearings, and a reinforced concrete deck. Due to the nature of the new roadway elevation, new drainage, curbs, guiderails, and asphalt roadway were installed. KC performed construction inspection of Stages 1 and 2, which consisted of 4 of the 11 new steel girders and a new 33-foot-wide concrete deck on the west side of the structure. Stage 3 included demolition and installation of 4 girders on the east side of the bridge.

NYS DOT Contract D037607: Region 8 Bridge Maintenance, Dutchess, Orange, and Westchester Counties, NY | The project scope included the rehabilitation of several bridges in Region 8. The scope of work included repair of existing bridge superstructures, structural steel, abutments, and piers; painting; and installation of new deck systems. KC's inspectors were responsible for providing detailed inspection, on-site field testing of materials, field measurement, and preparation of monthly and final estimates, progress reports, and record plans detailing all deviations from the contract plans.



Orange County Department of General Services Contract RFP-DPW01-19: Engineering and Construction Inspection Services, Orange County, NY | The project scope included providing construction inspection services on an as-needed basis for various Orange County construction projects, including site construction and development; building renovation and construction; bridge rehabilitation and replacement; roadway construction and placement of asphalt pavement; sewer, water, and gas main installation; and/or sanitary sewer collection and treatment system improvements. Projects included the Smith Farm housing development, North Interceptor sewer main, Hamaspik of Orange County, 282 Mountain View – Reisman, and the sanitary sewer main line extension at Acres Point.



Diversified. Multidisciplined.

KC Engineering and Land Surveying, P.C. (KC) is a diversified, multidisciplined consulting engineering firm. Since 1983, KC has provided our public and private sector clients with a comprehensive range of professional services using only the latest technical equipment. The corporate headquarters of the firm is located in New York City, with branch offices in Newburgh and Albany, NY. KC has extensive experience with government agencies, municipalities, and private clients; a diverse, professional staff; and an impeccable record of services rendered.

New York City

7 Penn Plaza, Suite 1204
New York, NY 10001
(212) 947-4945

Hudson Valley

15 Governor Drive, Second Floor
Newburgh, NY 12550
(845) 931-2900

Albany

100 Great Oaks Boulevard, Suite 122
Albany, NY 12203
(518) 209-7489

 kcepc.com

 facebook.com/kcepc

 x.com/kcengineeringpc

 linkedin.com/company/kcepc

