

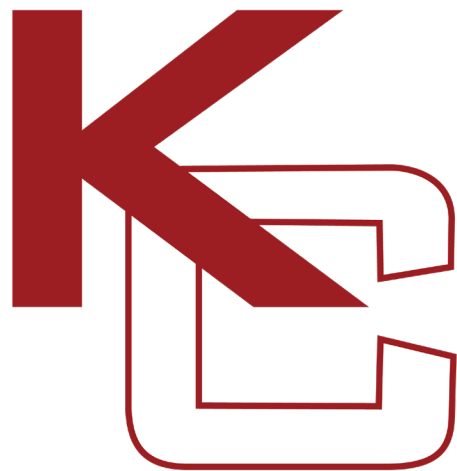
# BIRTHDAY

July 2019  
[kcepc.com](http://kcepc.com)

# CONTENTS

03

**A LETTER FROM RAJ RAVILLA**  
KC's president looks at the year so far.



04

**MILESTONES**  
... in which we welcome new employees and recognize the services of others.



08

**FOLLOWING THE TRAILS**  
Two engineers share their tales of trekking through the wilderness.



10

**CHLORINE**  
A transparent conversation about keeping the clouds out of our drinking water.



11

**KC WEARS RED 2019**  
In the name of healthy living, KC's three offices celebrated National Wear Red Day.

12

**PROJECT HIGHLIGHTS**  
From KC's workbench: a sneak peek at some of the new contracts on our desks.

13

**EARNING YOUR SEAL**  
Two licensed professionals give some advice on how to ace the test.

14

**NUMBERS**  
Statistics about KC.





## A LETTER FROM RAJ RAVILLA

***Rajashekar (Raj) Ravilla, P.E. is KC's president. He is responsible for the quality assurance and quality control of all projects and ensures a direct line of communication to each client at the highest level of management in the firm.***

As we make our way through the second half of 2019, let us remember to keep our momentum. For everyone at KC, this means maintaining our concentration as we continue to pursue larger and more complex design-builds and projects.

The anticipated consolidation of our Poughkeepsie and Circleville offices, as well as

the expansion of our New York City location, grants us the freedom to strengthen our team by filling these newly opened spaces with hard-working, talented professionals.

We're excited to add to the KC family, especially now that we'll have room for everyone to grow as individuals, as leaders, and as a unit – and

as we train newcomers and recruit experts, our vitality can only increase.

In order to maintain our presence and establish ourselves as a kinetic force in the engineering world, KC has continued pursuing design-builds and other large-scale projects. With each successive submission, we accumulate experience,

“Let us remember to keep our momentum.”

create stronger bonds with our teaming firms, and gain motivation to tackle the next task with vigor.

And just as we intend to surge onward through the year, we must remember the roots from which we have risen.

Our dedication to quality, safety, and accountability are the pillars of KC. Whether it is a project that we know can be

completed under budget or ahead of schedule, or a few extra minutes of reviewing a finalized submission to ensure everything is truly our best work, we must not forget our responsibility as professionals to our communities, our municipalities, and our world.

I wish you all a joyous summer, now let's finish the year strong! **-RAJ**



# MILESTONES

New talent is constantly integrated into our team thanks to ongoing growth at KC. This quarter, we welcome a number of new employees from varied disciplines, and we also celebrate major milestones for several KCers. Competitive compensation and engaging work make KC an attractive firm at which to build a long-term career.



**ASST. SURVEY MANAGER  
VINCENT DIBELLO, P.L.S.**

Vinny's 10<sup>th</sup> year with KC passes this quarter. Rising from Party Chief to Assistant Survey Manager, Vinny's work in the Survey department has been diligent and highly beneficial to the firm. He's been involved in all sides of survey, ranging from right-of-way mapping to coordinating field crews. He also recently earned his P.L.S., distinguishing him as a Professional Land Surveyor in New York State. Congratulations, Vinny!

10



**SR. ENG. AUDITOR  
AHMAD AWAN, P.E.**

This quarter marks Ahmad's 10<sup>th</sup> year with KC. With over 35 years of experience under his belt, Ahmad's expertise ranges from structural engineering, to project management, to QA/QC and auditing. He has extensive working knowledge of DDC, DEP, and DOT policies, specifications, and procedures. Having worked on various multimillion-dollar design-builds, Ahmad's experience as a quality manager has contributed to KC's success.

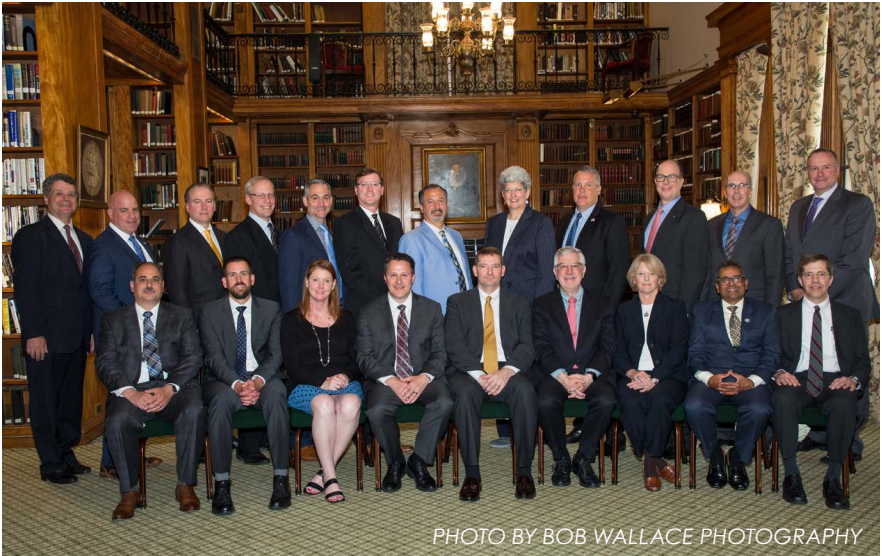
10



**VP / PROJECT MANAGER  
JAMIL YOUSEF, P.E.**

KC celebrates Jamil's 10<sup>th</sup> anniversary with the company this quarter. As Vice President and head of the New York City office, Jamil has been an integral component of the team, managing all structural projects and design-builds. With over 35 years of experience, Jamil has overseen all phases of multimillion-dollar design, construction, and infrastructure projects for government and private sector clients.

10



**AMERICAN COUNCIL OF  
ENGINEERING COMPANIES  
NANCY CLARK JOINS  
2019-2020 STATE BOARD**

On June 5, Nancy was installed on the Board of Directors for ACEC New York. As of July, which marks the Council's new year, she will be serving on the State Board. Great job, Nancy!

PHOTO BY BOB WALLACE PHOTOGRAPHY





5

**SURVEY PARTY CHIEF  
KENNETH WIDMAN, E.I.T.**

An experienced member of the Survey department, Ken celebrates five years with KC this quarter. Ken is familiar with all facets of surveying, including boundary, right-of-way, topographic, GPS, and wetland surveys. With seven years of experience, he has worked on several survey projects for local municipalities and the NYCEDC.



5

**MARKETING MANAGER  
ALYSSA WATKINS**

KC celebrates Alyssa's fifth year with the company this quarter. As the head of the Marketing department, she proofreads and edits all proposals before they are submitted. She also leads KC's quality management system as the QM representative and is responsible for the quality of all content produced by KC.



5

**VP / PROJECT MANAGER  
NANCY CLARK, P.E.**

Starting out as a Senior Project Manager and eventually becoming Vice President and head of the Poughkeepsie office, Nancy has risen through the ranks in her five years with KC. With over 30 years in the engineering consulting business, she has worked on countless projects for public and private sector clients in the Hudson Valley.



NEW

**PROPOSAL COOR.  
LAUREN SIRNA**

A graduate of SUNY New Paltz, Lauren joined us in Circleville this January as a Proposal Coordinator. Throughout her career, Lauren has strengthened her skills in communication and coordination, and with a fitness for writing and editing, she's already proven herself to be a perfect fit for the Marketing team.



NEW

**PROJECT ACCOUNTANT  
EMILY WINNER**

Emily joined our Circleville office this year as a Project Accountant. A graduate of SUNY New Paltz, Emily's background in business and finance – coupled with her strength in customer service – allowed her to seamlessly fit into the Accounting department. Her financial finesse and leadership skills will definitely be utilized to their fullest extent.



NEW

**STRUCTURAL ENGINEER  
SIDDHANT MEHTA**

Earlier this year, Sid joined KC's New York City office as a Structural Engineer. With five years of structural engineering experience, he's already begun applying his expertise to one of KC's design-build projects: the Kew Gardens Interchange. Sid is highly experienced in performing analysis, inspection, and design.



5

**SURVEY PARTY CHIEF  
KEVIN JENKINS**

This September will mark Kevin's fifth year with KC as a Survey Party Chief. With nine total years of experience, Kevin has surveyed areas for various government agencies, including NYCDDC, NYSDOT, and NYCSCA. He also has experience drafting surveys, recording stakeout calculations, and using AutoCAD for property stakeouts.



5

**CIVIL ENGINEER  
NEEL PATEL, P.E.**

A graduate of Rutgers University, Neel celebrates his fifth anniversary at KC this September. He's worked on several highway projects, including the Van Wyck and Nassau Expressways, helping map utilities and design horizontal and vertical alignments. He has also been involved in several bridge design and inspection projects.

*KC would like to give a special*

***Congratulations to  
Neel Patel, P.E.***

*on recently passing his  
PE exam and earning his  
seal! Way to go, Neel!*



NEW

**CIVIL ENGINEER  
TIANMING HAO, E.I.T.**

Tianming joined us in New York City this past March as a civil engineer. A graduate of Rochester Institute of Technology, Tianming is experienced in a variety of civil engineering aspects, including grading and stormwater design, compaction inspection, and construction management.



NEW

**CIVIL ENGINEER  
AMER KISWANI**

Amer joined us last quarter in our New York City location. A civil engineering graduate of CUNY City College of New York, Amer's education has prepared him for the engineering world. Having competed in the NYC Regional Future City Competition and acted as lead during his senior design project, he joined KC ready to test his leadership skills.



NEW

**SENIOR INSPECTOR  
MOUSTAPHA SYLLA**

Moustapha joined the KC team as a Senior Inspector this past April. Previously a construction inspector from NYSDOT, he's worked on several highway, bridge, and retaining wall projects. His strength as an inspector, especially when it comes to site visits and condition assessments, will bolster our inspection team.





**CIVIL ENGINEER  
CALEB STEVENS, E.I.T.**

Caleb joined us this May as a Civil Engineer in our New York City office. Experienced in working on multi-county transportation projects, his engineering expertise fits perfectly into KC. Caleb is known for being a productive organizer and strong communicator and is actively pursuing his P.E. license.



**CIVIL ENGINEER  
BENSON LAM**

Benson joined us in our Circleville office this April as a Civil Engineer. A recent graduate from the University of Buffalo, he already has experience in drafting plans for small bridges and septic tanks, designing highways, and creating water filter designs from scratch. His knowledge of AutoCAD and his innovative thinking make him a great addition to the team.



**PROJECT MANAGER  
JOSEPH ZACHARIA, P.E.**

An experienced Project Manager with over 25 years of experience, Joseph joined KC this past spring in New York City. Bringing with him a wealth of design-build knowledge, having worked on multimillion- and billion-dollar projects covering everything from bridge designs to feasibility studies, his expertise is a great benefit to our firm.



**SURVEY TECHNICIAN  
DANNIELLE O'BUCKLEY**

This May, Dannielle joined us as a Survey Technician in the Poughkeepsie office. Danielle is getting a head start on her surveying career as she finishes up her bachelor's degree at Alfred State. Her previous experience performing as-built, boundary, and topographic surveys has enabled her to fit right into our Survey team.



**CONSTRUCTION MGR.  
DONALD SCHMALZLE, P.E.**

Donald joined us in Circleville last quarter as a Construction Manager, bringing with him a wealth of experience. He's managed a variety of design and construction projects, designed multiple residential and municipal stormwater projects, and performed final inspections of completed water and wastewater projects.



**PROJECT ACCOUNTANT  
SEVDIE DZELOSKA**

A graduate of Pace University, Sevdie joined our Circleville office this May as a Project Accountant. Sevdie's experience in preparing reconciliations and bookkeeping, paired with a sharp eye for detail, has made her a welcome addition to our Accounting team.



**CIVIL ENGINEER  
ALEX LEWIS**

A recent graduate of Widener University, Alex joined our Circleville office as a Civil Engineer this past spring. Bringing mechanical engineering experience to KC, as well as a proficiency in video pipe inspections, AutoCAD, and project management, he's ready to put his skills to the test and add to the versatility of our firm.



**CIVIL ENGINEER  
DJ GOODALL**

DJ joined our Poughkeepsie office as a Civil Engineer this May. He recently graduated from Clarkson University, having completed multiple internships where he gained experience working with AutoCAD, conducting SWPPP inspections, and filling out grant applications and FOIL requests – all essentials in the civil engineering field.



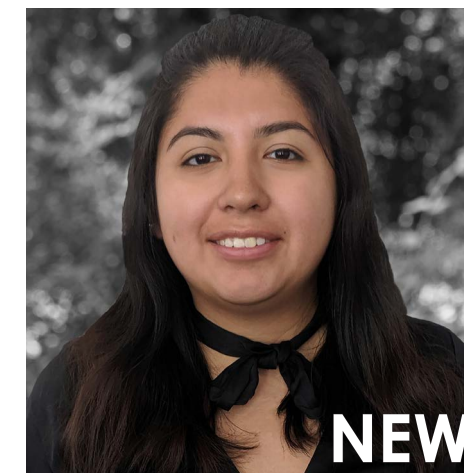
**CIVIL ENGINEER  
RICARDO RAMIREZ, E.I.T.**

A recent graduate of Manhattan College, Ricardo joined us in Circleville last quarter. Having completed multiple internships in engineering, project management, and construction inspection, he came to our team prepared to utilize everything he's learned. He also passed the FE exam – an important step to earning his P.E.



**STRUCTURAL ENGINEER  
EMILY DURCAN**

Emily joined our structural engineers in the New York City office this June. A graduate from Rensselaer Polytechnic Institute, she spent her undergraduate years immersed in co-ops and internships to hone her skills. With design research experience and an OSHA 10-Hour certification under her belt, she's ready to get to work.



**CIVIL ENGINEER  
JENNEFER MONTALEZA**

This June, Jennefer joined our New York City office as a Civil Engineer. Though she started with KC just after graduating from Syracuse University, she already has experience working on several design projects – she even helped teach a class of students to think creatively when designing bridges. Her leadership skills are integral to the team.



**CIVIL ENGINEER  
SEAN LENAHA, E.I.T.**

Sean joined our Circleville team earlier this quarter as a Civil Engineer. With five years of experience in stormwater management, site analysis, and building inspection, he's worked on a variety of civil engineering projects. Adding a strong knowledge of computer systems to the mix, Sean's skillset will be heavily utilized.





**CIVIL ENGINEER  
MATTHEW MCCURVIN**

Matthew joined the New York City office this summer as a Civil Engineer. He earned his degree in civil engineering from Rensselaer Polytechnic Institute, and is proficient in AutoCAD Civil 3D, Python 3, Synchro, Bluebeam, and QGIS. His experience in traffic engineering and mass transit systems make him a great addition to the NYC team.



**PROPOSAL COOR.  
DECIRE GONZALEZ**

This June, Decire joined KC as a Proposal Coordinator. A graduate of Coastal Carolina University, she came to our team prepared to utilize effective communication and organization. These skills will help her succeed with the Marketing department and at the front desk of our Circleville office.



**STRUCTURAL ENGINEER  
RILEY HAUBRICH**

Riley is a Structural Engineer who joined our New York City office in June. A recent graduate from Rensselaer Polytechnic Institute, he's worked on several design projects during his undergraduate years – including an internship with NYSOGS. His proficiency in AutoCAD, Revit, and BlueBeam will be especially helpful during our pursuit of design-builds.



**ENGINEERING INTERN  
ANDREW GRAHAM**

Andrew joined our engineers in Poughkeepsie last quarter for a summer internship. A student at the University at Buffalo, Andrew's been filling his portfolio with the Autodesk suite and a variety of engineering courses. His work with KC this summer will strengthen his skills and better prepare him for his future career.



**ENGINEERING INTERN  
KATHERINE SANTIC-CENTORCELLI**

Katherine started interning with KC this May in Circleville. While working towards her degree at SUNY OCC, she's honed her skills in the Autodesk suite, robotics, and building and structural analysis, in addition to taking a variety of civil engineering and design courses. By the end of her internship, she'll be more than ready to finish off her degree.



**ENGINEERING INTERN  
MATTHEW MULLAN**

Matthew joined our New York City office as an intern this summer. He is currently attending Bucknell University as a civil engineering major, expected to graduate next year. This internship, along with his previous apprenticeship to a general contractor, will be great experience for his future career – and he's sure to learn a few important things on the way.



**SURVEYING INTERN  
KAYLA BOCIANOWSKI**

Kayla started an internship with KC this May in our Poughkeepsie office. She currently attends the University of Pittsburgh's Swanson School of Engineering where she studies civil engineering. Involved in the ASCE and the Society of Women Engineers, Kayla is ready to learn as much as she can from her time at KC.



**ENGINEERING INTERN  
ROBERT KEDDRELL**

A civil engineering student from Manhattan College expected to graduate next year, Robert is being given a wealth of information by his mentors in the Circleville office. He's certainly made it easy for us with his proficiency in the full Autodesk suite, SAP2000, SketchUp, MATLAB, and C++.



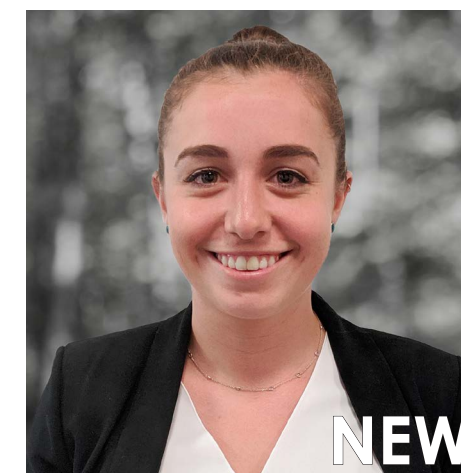
**ENGINEERING INTERN  
ALEXEI OHOTIN**

Alexei joined our New York City office as an intern this summer. Working with the structural engineering team, Alexei has the unique opportunity to learn from our engineers as he completes his degree from Stevens Institute of Technology. The experience he gains while working alongside our team will be highly beneficial when he begins his career.



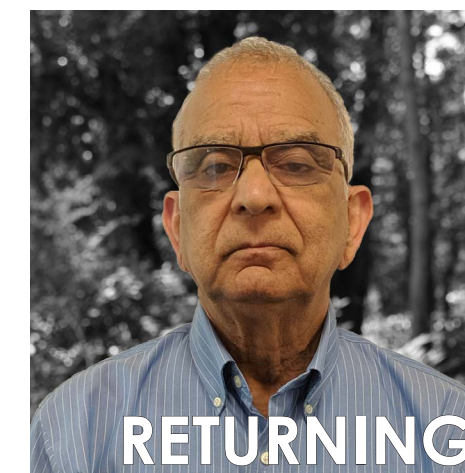
**ENGINEERING INTERN  
NICOLE FELEDY**

Nicole is an intern working in our New York City office this summer. Learning how to work both in the office and the field, she will gain the knowledge she needs to complete her degree in environmental engineering at Bucknell University – preparing her for when she's ready to join the workforce.



**ENGINEERING INTERN  
GIANNA ARATA**

Gianna started her internship at the New York City office this summer. Adding to her repertoire of previous internships – where she studied civil, construction, and structural engineering – Gianna will have a wealth of knowledge to help her finish her degree in civil engineering at Bucknell University. The mentorship of our engineers will surely help, too.



**QUALITY MANAGER  
JAIKRISHEN LAL, P.E.**

Jai rejoined our New York City office as Quality Manager this May after taking a few months off in 2018. He has an extensive career spanning back to the 80s, which has granted him over 35 years of experience as a site safety manager and NYS-certified building code enforcement official. We are glad to have him back.



# FOLLOWING THE TRAILS

*Sometimes life simply cannot wait, and for two of our civil engineers, that meant taking a trip into the wild. Having returned to the KC team in late 2018 after embarking on two separate, challenging hikes, we spoke with Ryan Stratton and Sam Cash about their experiences.*

**Ryan:** I hiked the Pacific Crest Trail (PCT), which goes from the US-Mexico border near San Diego to the US-Canada border near Vancouver. It's about 2,650 miles and took 4.5 months.

One of my oldest and best friends asked me to do it with him. He knew he'd be getting engaged soon, so he wanted to do something kinda crazy first – before settling down. He came up with this hike, and since we've grown up together and both have done plenty of hiking and camping together, he thought I'd be a good partner. I was kinda hesitant, but figured, *what the hell*.

I didn't really do anything special to prepare. I did some research online and talked to a friend who did it a few years before – I had a decent idea of what to expect, but mostly figured things out as I went.

The trail started in the desert, where we dealt with long stretches without water (20-30 miles), dodged rattlesnakes, hiked at night to avoid daytime temperatures, and were surrounded by cactuses.

We transitioned to the Sierra Nevada Mountains in central California – which in May were still covered with snow. The trail here was often over 10,000 feet in elevation and topped out at 14,500 feet at the summit of Mount Whitney (which is the tallest mountain in the lower 48). We had to struggle through knee- and waist-deep snow, cross 40-degree rivers full of snow melt, and adjust to the high altitude.

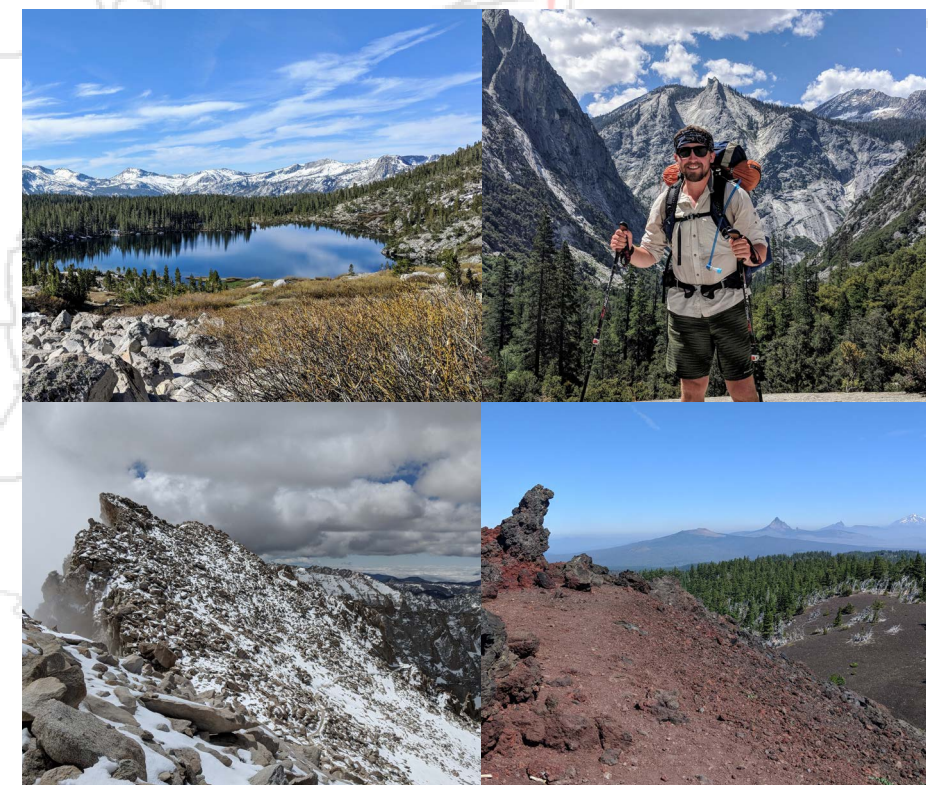
Eventually around Lake Tahoe we left the snow

and entered northern California – hiked through this, then Oregon, and finally Washington. Along the way we went through Sequoia, King Canyon, Yosemite, Crater Lake, and Cascade National Parks.

The first two weeks or so were tough, but eventually your mind adjusts to the new lifestyle and you get in a groove – it becomes just like going to work every day. Wake up at sunrise, quickly eat breakfast, pack up your tent and gear, and start walking. Hike 8-12 hours a day, take breaks to eat, grab water, swim, nap, etc. Eventually get to camp and set up your tent, make and eat dinner, then fall asleep. Rinse and repeat.

We would typically hike 3-6 days then hitchhike into a town when the trail crossed a road. We'd buy more food and supplies, maybe do laundry/take showers, pig out at some restaurant, then hit the trail the next morning.

After the first couple of weeks I never doubted I'd finish – it was just a matter of when. You just slowly chip away 20-40 miles a day.





**Sam:** I walked 2,190 miles on the Appalachian trail between Mount Katahdin in Maine and the trail's original terminus on Mount Oglethorpe in Georgia. Hiking long trails has become increasingly popular, so to avoid crowded conditions I chose to do a "flip flop" hike—starting in West Virginia and hiking north, then catching a ride back to where I started (thanks Dad!) and hiking south.

In the months leading up to my hike, KC was taking on new clients and a wider array of projects, and the team at the Circleville office changed to meet and exceed those needs. When a team member at the Financial Gym I'd joined asked me about my goals, the idea of hiking the trail came up. I didn't think that a financial advisor would be the person to tell me to leave my job for six months and go for a walk in the woods, but when she did, I started planning.

When I was hiking the northern section, I met a bunch of interesting hikers also trying to walk to Maine. The towns and surrounding community knew it was the time of year hikers would be passing through and catered to our needs – some folks even regularly left bottled Gatorade and beer in a cold stream on the trail.

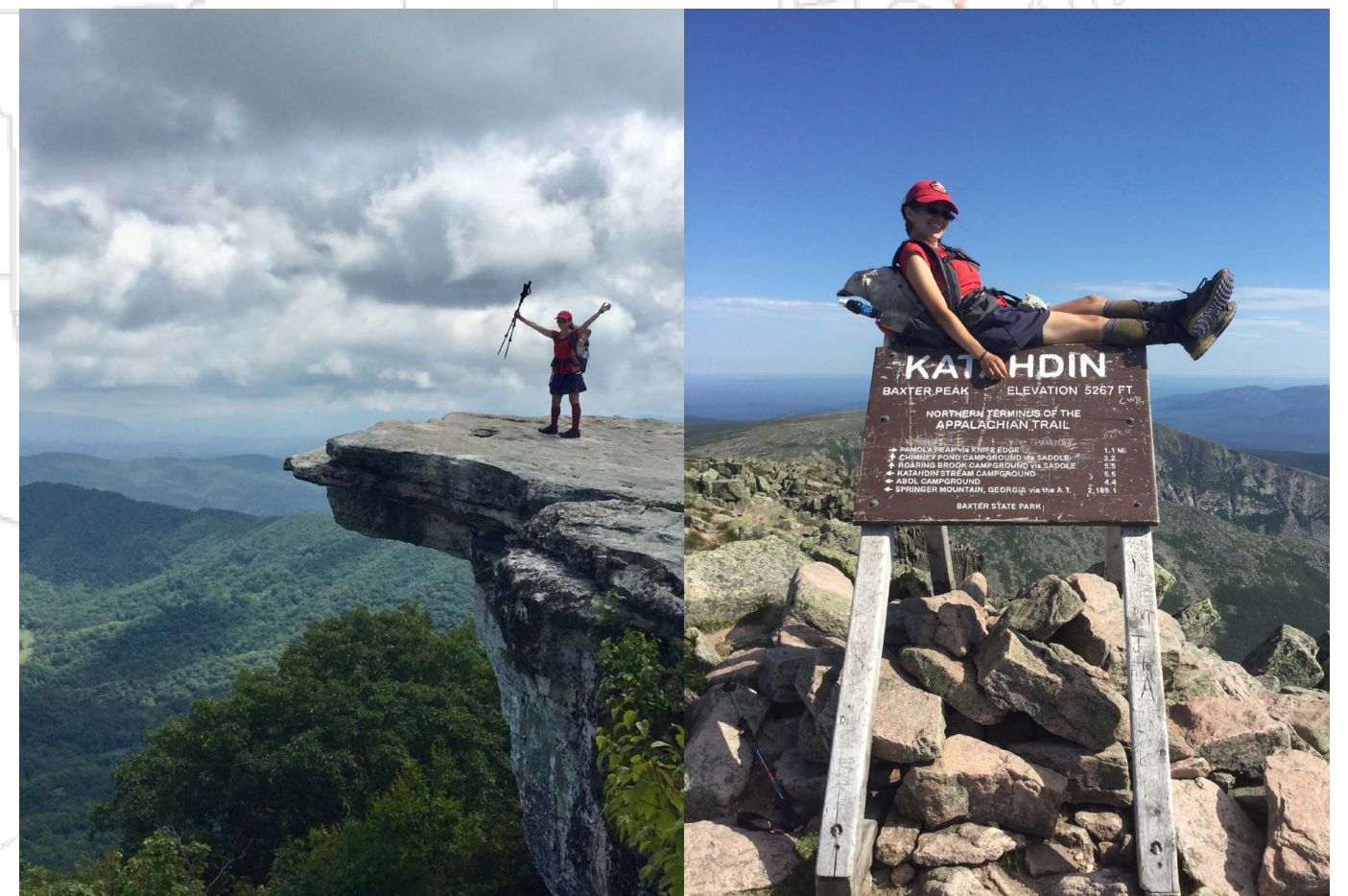
There were very few hikers in the south, and most were only out for a day or two. The solitude grew challenging but it made me appreciate hiking with my sister for the last few weeks of the trail.

I experienced some of the challenges you would see in the media. I saw eight bears in one day; got bit by a dog; fought sickness without the luxury of indoor plumbing; had to hike on as the sun dipped below the horizon because a campsite was too crowded for me to stay at New Hampshire's White mountains; and worried those around me that I might have Lyme disease because my energy levels waned from not consuming enough food.

A less glamorous but equally challenging endeavor was taking the leap and telling everyone at KC of my plans. The team had just adapted to meet the company's growing needs and I had a place in that which I enjoyed and didn't want to lose. I was grateful

to be given time off without limit and to know that KC would welcome me back at the end of my trip, especially because I met people along the trail who couldn't complete the journey due to work-imposed time limits. Knowing that few other people have the privilege of a leave of absence was a huge motivator that kept me going when the trail was challenging.

My hiking goal was clearly defined by white blazes that marked the trail. It isn't quite as simple figuring out exactly what a client's needs are for a project, or what the state is looking for in P.E. experience requirements, but those are the tasks of this next adventure. ☺







# CLOUDY SKIES, CLOUDY WATER, & CHLORINE

Access to clean, reliable drinking water is often championed as a basic human right – yet there are layers to its achievement. In the conversations surrounding clean drinking water, issues with the filtering process or methods of disinfection can become charged, especially when scientific study is incapable of assessing all possible variables and ultimately leaves room for debate. Amid these challenges is the question of using sodium hypochlorite (chlorine) as a disinfectant for water, as it has its benefits as well as its drawbacks – but where do the weights fall when it pertains to our drinking water?

Following the filtration process, water is disinfected to eliminate any remaining bacteria and microbes, as well as to protect it from any contaminants it may encounter through the piping systems. One of the more popular disinfectants used is chlorine, as it fights bacteria and viruses, protects against recontamination, and is relatively inexpensive compared to other options. First used as a disinfectant in New Jersey over a century ago, chlorine levels up to 4 mg/L in drinking water are regarded as safe to drink according to the US Environmental

Protection Agency (EPA) and the Centers for Disease Control and Prevention (CDC).

One of the major issues associated with chlorine as a disinfectant is the potential for byproducts to form if unchecked. Trihalomethanes (THMs) – i.e. trichloromethane, dibromochloromethane, bromodichloromethane, and tribromomethane (bromoform) – form when chlorine reacts with naturally occurring organic and inorganic material within the water. These materials are typically removed following filtration, but if any remain, they can react with the chlorine.

Additional factors that affect the formation of THMs include: the disinfectant dosage, the contact duration, the type and level of existing organic/inorganic material, and the pH and temperature of the water. According to the EPA, long term consumption of THMs is linked to an increased risk in liver, kidney, and central nervous system problems, as well as cancer – however, there isn't sufficient evidence yet to confirm these connections. Nonetheless, the generally accepted rule is that a high level of THMs – or any disinfectant byproducts for that matter – is undesirable.

Chlorine dioxide is sometimes used as an alternative disinfectant to chlorine. It is more effective at eliminating bacteria and viruses even at lower concentrations, it doesn't affect the odor or taste of water, and it will not form THMs – however, it can instead form chlorite and chlorate (not considered carcinogenic to humans according to the World Health Organization, yet long-term studies are still being conducted). Chlorine dioxide is also much more expensive than chlorine and is explosive due to its instability – requiring additional safety precautions when being handled and transported.

KC's water supply group combines experience and insight to create long-term water solutions that manage water resources and provide safe and reliable drinking water supplies. We have years of comprehensive experience in developing new water sources as well as improving and expanding existing delivery systems.

With nationwide issues like the Flint water crisis exposing the dangers of insufficient water treatment, it's our responsibility to clean and protect the water being used by our communities. ☐

■ The Wallkill Consolidated Water District has 8 storage tanks that were built between 1987 and 2000, with a total storage volume of 11,000,000 gallons.





# KC CELEBRATES WEAR RED DAY 2019

KC celebrated the American Heart Association (AHA)'s 15<sup>th</sup> annual "National Wear Red Day" on February 1<sup>st</sup>, supporting the fight against cardiovascular disease in women as part of a nationwide effort known as Go Red for Women®.

Heart disease claims the lives of more than 400,000 women each year and is the number one leading cause of death for women – that's about the same as the next three most common causes of death combined. Luckily, about 80% of cardiovascular diseases may be prevented.

"Eat a heart-healthy diet, be physically active on a regular

basis, don't smoke, and stay at a healthy weight," says Dr. Suzanne Steinbaum, a senior faculty member of cardiology at Mount Sinai in New York, NY. AHA recommends a diet rich in vegetables, fruits, lean proteins, healthy fats, and whole grains; at least 150 minutes per week of moderate-intensity aerobic activity and/or 75 minutes per week of vigorous aerobic activity; and plenty of sleep and stress relief.

In the spirit of health and wellness, employees at the Circleville, Poughkeepsie, and New York City offices enjoyed a healthy breakfast

spread while adorned in various shades of red.

For our English friends across the pond, February 1<sup>st</sup> was also Wear Red Day; however, their event aided the Leeds Congenital Heart Unit at the General Infirmary through The Children's Heart Surgery Fund. Regardless of where you are in the world, if you missed Wear Red Day this year, be sure to join us next time. Together we can raise awareness and help make healthier hearts everywhere!

φ





# PROJECT HIGHLIGHTS

*KC takes pride in being the leading mid-sized consulting engineering firm in the Mid-Hudson Valley and New York Metro area. This distinction is a direct result of our multi-disciplinary approach. What's currently on our desks? Read on.*

KC's work log includes dozens of unique projects, handled by teams of staff carefully grouped to take advantage of their unique individual skills.

**NEW AWARD: D800002: Cashless Tolling Design-Build:** This Design-Build project involves the design and construction of "Cashless Tolling" on the New York State Thruway from approximately Exits 16 (MP 45.00) through 61 (MP 496.00), as well as the removal of many older tolling structures. The Cashless Tolling Constructors, LLC team, which includes KC, was selected as Best Value Team for this project. KC leads the structural engineering team, including providing design for the toll gantries; generators / MEP; and communication buildings, including tie-in points to existing power and fiber sources and adequate parking space. KC also performs quality management, surveying, and civil and utility engineering services.

**NEW AWARD: CY-XS-0001-19: Various Professional Engineering and Related Services for Somerset County for the Year 2019:** This year, KC will provide professional engineering services for Somerset County in the following categories: engineering/design services for the replacement or rehabilitation of various

types of bridges; engineering/design services for the reconstruction of roadways; and bridge and roadway inspection services, including construction engineering and integrity inspections. Our team of structural and civil engineers, as well as our inspection staff, are dedicated to responsive and quality service and are well equipped to serve Somerset County's engineering needs.

**NEW AWARD: GCBB26-01: Green Infrastructure in the Bowery Bay Drainage Area, Boroughs of Brooklyn and Queens:** Adding to our longstanding relationship with the New York City Department of Design and Construction, KC will be working in the boroughs of Brooklyn and Queens, NY to oversee the construction of 300 right-of-way green infrastructure practices, including the installation of more than 4,000 linear feet of curb and 33,000 square feet of sidewalk, as well as the planting of more than 4,350 trees, shrubs, and ornamental grasses and groundcover. These new additions will reduce the amount of stormwater that enters the sewer system, thus preventing CSOs, which overflow into the New York Harbor.

**NEW AWARD: D037842: Construction Inspection for Taconic State Parkway at**



■ Survey Party Chief Christopher Depoala scans an auxiliary lane on the Long Island Expressway.

**Pudding Street:** Working with Hudson Valley Engineering Associates, P.C., KC will be providing inspection services for the Taconic State Parkway (TSP) at the Pudding Street Interchange. This contract seeks to construct a full diamond interchange at the current intersection, and will also require a new two-span steel multi-girder bridge. With a team of professional inspectors who have worked on numerous highway and bridge projects, KC is highly capable of delivering expert inspection services for this project.

**NEW AWARD: Village of Wappingers Falls Water and Sewer Infrastructure Study:** KC was unanimously selected to study potential interconnections of water and sewer infrastructure between the Town of Wappinger and the Village. Separated into two tasks, the goals of this study are to 1) find ways to connect the water system for the Town and Village to allow municipal water services to be shared, and 2) investigate a way to remove aging sanitary treatment plants in the Town and convey them into the Tri-Municipal Collection System. Because the plants are tributary to the Wappinger Creek and the Tri-Municipal Sewer Commission is tributary to the Hudson, removing them will also improve the water quality of the Creek.





# EARNING YOUR SEAL

*The process of becoming a professional may sound daunting, but take it from our licensed engineers and surveyors – it doesn't have to be. Need a few words of wisdom or some advice on how to make it through the process? Hear what two of KC's pros have to say:*

## **Michael Tamigi, P.E.**

The hardest part of the application is writing up your work experience or submitting it for approval. You want to make sure you prepare your experience in a way that demonstrates progress – that you're learning along the way – so nothing gets disqualified. If you change jobs, submit your experience right at departure. Submit it when it's logged with your company at the time so you know you have it and don't have to go back and look for it.

Start studying three months ahead of the exam. Save the practice exams for the end so you don't waste them, and make sure you're up to speed on your studies first before taking a practice exam. Take the test in the field most familiar from undergrad study – don't do what you're practicing in the office.

Take a bit of a break – like a couple of days' worth of not thinking about it – right before the exam. Drive to the hotel the night before and scope out the site so you know where it is, where to park. Make sure your lunch is prepped for the next day.

Don't bring excessive amounts of reference materials; the ones that you study with are going to be your best references. Bring a backup calculator.

PEs working at KC were able to assist with study resources and guidance on taking the exam, such as pre-visiting the exam site. Take advantage of the opportunity to get your PE with someone or learn from someone who got theirs.

There's no reason to not become a professional. If you stay in academia, a doctorate might be beneficial, but a PE is the ultimate goal of an engineer. You got into this career to be effective and do things that matter. Having a license is what allows you to truly demonstrate that you have the technical knowledge because the responsibility is on you at this point. ☐

## **Vincent Dibello, P.L.S.**

Compile all of your experience. Keep records of everything you work on and be on good terms with prior bosses in case you need to ask them for information.

Do not take the test without studying. You can never study enough, so review and study. NCEES provides practice exams – take them once and only once. If you look at the answers, you won't be able to take them again, so just once when you're ready. Even though [the state licensing exam] is open book, if you take too long looking up answers on every question, you'll run out of time, so take a review course beforehand.

The night before the exam, do a subtle review if you need to – just a glance. Be confident. Don't overanalyze, just let your mind do the work. The morning of, don't review. Eat a good breakfast, get ready, go to the site early so you know where everything is. Don't think, just do. Have that level of confidence.

In the moment, during the test, go through every question right off the bat. Make notes on things you don't know, and read every answer carefully. If you're stuck for more than five minutes on a question, flag it and move on.

A lot of my material came from KC, and everyone provided encouragement. Nick [another P.L.S. at KC] advised me to take the state review course, which was the best \$150 I've ever spent. The review books are expensive, but just buy the book – and make sure your resources are up-to-date.

I became a surveyor to ascend to the next level. I wanted to prove that I could make something of myself. Always push yourself, and don't be afraid to take criticism. Be honest on that application. ☐





- KC provided consulting services for the design, permitting, inspection, management, and support of the Kauneonga Lake Wastewater Treatment Plant.

# NUMBERS

**10** ***New opportunities awarded during 2019 so far***  
KC continually wins new jobs thanks to our qualifications and our leadership.

**4** ***Municipalities where KC is the Municipal Engineer***  
We take pride in serving our clients, especially when it benefits our local communities and residences.

**85** ***Proposals submitted in 2019 so far***  
KC's project managers, in tandem with the marketing group, produce a steady stream of new proposals, keeping KC at the forefront of the industry.

**115** ***KC employees***  
KC's staff is comprised of engineers from many disciplines, land surveyors, inspectors, and administrative staff.

**3** ***KC offices***  
KC is currently located in New York, NY; Circleville, NY; and Poughkeepsie, NY.

**1,000+** ***Milestones completed in 2019***  
Project milestones, sometimes called "tasks," define key developments. KC works to complete all projects on or ahead of schedule.

**4** ***Career positions currently listed on KC's website***  
There are plenty of opportunities to join KC, and new ones are always being added. Visit our website's career page at [www.kcepc.com/careers](http://www.kcepc.com/careers) to find out more.