



Engineering and
Land Surveying, P.C.

Knowledge. Commitment. Excellence.
www.kcepc.com

COMPANY NEWSLETTER

THIRD QUARTER: SEPTEMBER 2016

PRESIDENT'S MESSAGE

Greetings,

KC has continued to expand this quarter, adding 12 new professionals to the KC family. They bring diverse experience and expertise to our company, which will allow us to pursue a broader range of projects. Our KC personnel provide our clients with personalized services, devoting their time and attention to each project, and we are pleased to continue to grow as a company and add to our diverse staff. Our staff's professional knowledge continues to grow as well, with several personnel receiving specialized trainings. Congratulations to Christian Moore for recently passing the PE exam and earning his Professional Engineer license!

KC is also pleased to announce that we have partnered with ECCO III Enterprises, Inc. (ECCO III) on a \$42.4 million design-build project consisting of two bridge replacements in Ulster County. The New York State Department of Transportation has selected the ECCO III-KC Design-Build Team to design and replace the Route 209 bridge, located in the Town of Rochester over Rochester Creek, and the Route 28 bridge, located in the Town of Shandaken over Esopus Creek. Both bridges will be planned and constructed to minimize future roadway flooding and bridge abutment scour while also taking natural surroundings into consideration.

KC will spearhead the design of the bridges and approach roadways, including all structural, civil, hydraulic, geotechnical, environmental, and design surveying work. Thank you to everyone for your continued hard work on this impressive project, which demonstrates KC's talent and commitment to providing excellent services.

- Raj

**MARK
YOUR
CALENDAR**

Events:

Holiday Party
Friday, December 16

Company Holidays:

Thanksgiving Day
Thursday, November 24

Christmas Day (Observed)
Monday, December 26

WHAT'S INSIDE

President's Message	1
Upcoming Events	1
Welcome New Employees	2
Project News Highlights	4
Community Involvement	7
Company Events	8
Awarded Projects	9
Completed Proposals	21

WELCOME NEW EMPLOYEES



John Bell, Jr.

Mr. Bell joined KC in the Circleville office in July as a Civil Engineer. He has a Bachelor of Science degree in environmental engineering from Clarkson University.

Eugenio Macri

Mr. Macri joined KC in the Circleville office in July as a Civil Engineer. He has a Bachelor of Science degree in civil engineering from Manhattan College.



Daniel Boino

Mr. Boino joined KC in the Circleville office in August as an Accountant. He has a Bachelor of Business Administration degree in general accounting from Pace University.



Algasimu Jallow

Mr. Jallow joined KC in the Circleville office in August as a Civil Engineer. He has a Bachelor of Science degree in civil engineering with a concentration in transportation from Clarkson University.



Armida Santamaria

Ms. Santamaria joined KC in the New York City office in August as a Senior Engineering Auditor. She has an Associate of Science degree in computerized architectural and industrial design from Queensborough Community College.



Srinivas Sivakoti, E.I.T.

Mr. Sivakoti joined KC in the New York City office in August as a Civil Engineer. He is a certified Engineer-In-Training, and he has a Bachelor of Science degree in civil engineering from the National Institute of Technology.



WELCOME NEW EMPLOYEES



Erika Smith

Ms. Smith joined KC in the Circleville office in August as a Proposal Coordinator. She has a Bachelor of Arts degree in English from Mount Saint Mary College.

Kamal Kishore, P.E.

Mr. Kishore joined KC in the New York City office in August as Vice President of Quality Management. He is a licensed Professional Engineer, and he has a Master of Science degree in technology from the Indian Institute of Technology, Kanpur.



Ahilan Thurairajah, P.E.

Mr. Thurairajah joined KC in the New York City office in August as a Project Engineer. He is a licensed Professional Engineer, and he has a Bachelor of Science degree in civil engineering from the University of Peradeniya.



Chakradhar Vallabh, E.I.T.

Mr. Vallabh joined KC in the New York City office in August as a Civil Engineer. He is a certified Engineer-In-Training with a Master of Science degree in civil engineering from Clemson University.



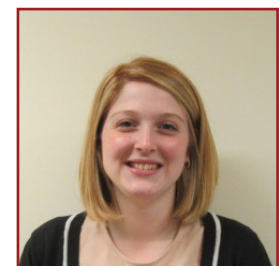
Vishnu Awasthi, P.E.

Mr. Awasthi joined KC in the New York City office in September as Director of our Structures Group. He is a licensed Professional Engineer, and he has a Bachelor of Science degree in structural engineering from Polytechnic Institute of New York.



Mary Broas

Ms. Broas joined KC in the Circleville office in September as a Proposal Coordinator. She has a Bachelor of Arts degree in English from SUNY New Paltz.



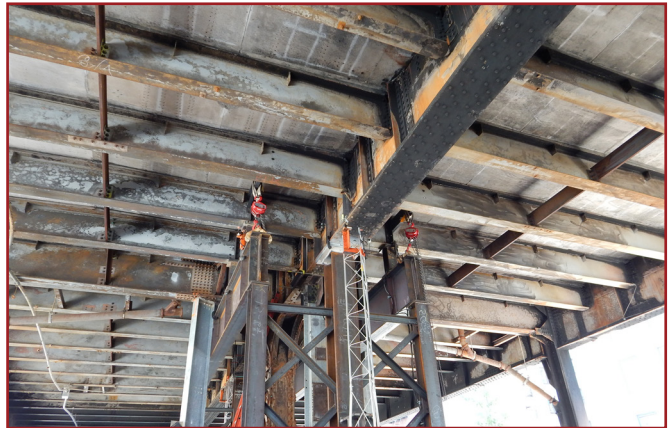
PROJECT NEWS HIGHLIGHTS

New York City Office Projects:

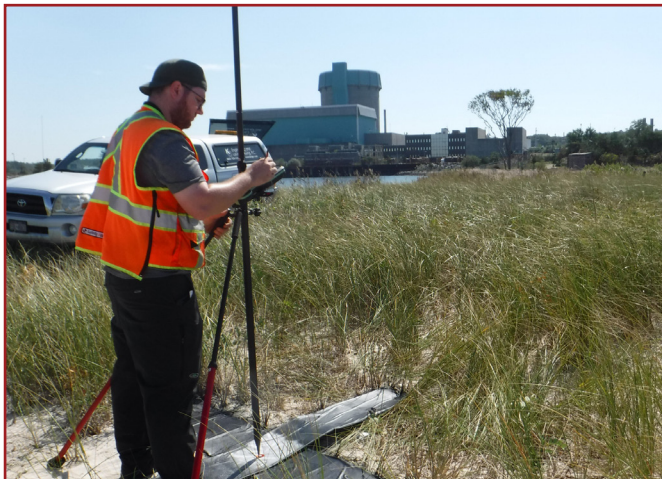
KC partnered with ECCO III Enterprises, Inc. for the *Emergency Repairs of the Park Avenue Viaduct at 118th Street Design-Build* project. The Park Avenue Viaduct sustained structural damage due to a fire in May, and the temporary repairs needed to be redesigned into a more permanent solution. KC completed the design of temporary support framing system for the replacement of the viaduct’s fire-damaged center column.



Temporary Support Framing



Fire-Damaged Column



GPS Observations of the Aerial Targets

KC’s survey group has been tasked with providing base topographic and bathymetric mapping for the *Shoreham Deep Water Port Study*, which involves coordinating work with two sub-consultants: Golden Aerial Surveys for the photogrammetric portion and Gallagan & Bryant Associates (GBA) for echosounding services to map approximately one mile of the channel. KC’s survey group set aerial targets and benchmarks for the sub-consultants, which they will field edit and merge the photogrammetry and hydrographic mapping.

PROJECT NEWS HIGHLIGHTS

Poughkeepsie Office Projects:

KC assisted the Village of Wappingers Falls with obtaining two NY water grants: \$5 million through the **Clean Water State Revolving Fund (CWSRF)** and \$3 million through the **Drinking Water State Revolving Fund (DWSRF)**. The Village achieved the maximum grant awards available. With the additional funds, the current CWSRF/DWSRF Utility Improvement Project is being expanded from \$20 million to \$28 million. This large overall CWSRF/DWSRF project is being completed in phases. Contract 2 is in construction and Contract 3 is in design. Before the water grants were awarded, Contract 3 was going to be the end of the project, with construction completing in 2017. The overall project will now extend through Contract 5 construction in 2019.



South Avenue Paving



South Avenue Paving

The design phase for the \$875,000 **Village of Wappingers Falls TAP Pedestrian Improvements Project** continues. The project features curb bumpouts, crosswalks, and pedestrian safety lighting in the Village commercial district. Bidding is targeted for 2016 in preparation for 2017 construction. Construction for the \$670,000 **Village of Wappingers Falls ESD Bleachery Sanitary Sewer Project** is underway and will be completed in 2016. The project features gravity sewer, pump station, and forcemain funded by NYS Empire State Development as a development incentive project for an under-utilized area of the Village. Stakeout for the **Pike Company** is continuing at Marist College. KC survey staff have also been completing survey assignments for the **LIRR** and a **nuclear power plant site**, as well as fieldwork on **Warburton Avenue** in Hastings-on-Hudson.



Route 9D Pedestrian Improvements

PROJECT NEWS HIGHLIGHTS

Circleville Office Projects:

KC is currently working on the **High Grove Subdivision Phase II** project in the Village of Washingtonville, NY. The owner is completing the public improvements for the Phase II portion of the project in preparation of offering the lots in this phase for sale. Phase II includes 13 of the homes in this 71-lot residential subdivision. Work during this phase has included over 1,500 feet of water, sewer, and drainage infrastructure. The owners anticipate continuing construction of the next phase immediately.

KC has previously provided design services for the High Grove Subdivision project, from boundary and topographic surveys to construction plan preparation for final approval. Infrastructure designed by KC has included 7,940 LF of roads, 6,400 LF of gravity sewer line, 8,200 LF of water line, a pump station, and two storm water management ponds. Approvals required for this project have included, but are not limited to, the following agencies: Orange County Department of Health, New York State Department of Environmental Conservation, Army Corps of Engineers, Village Department of Public Works, and the Village Planning Board.



High Grove Subdivision Phase II



High Grove Subdivision Phase II

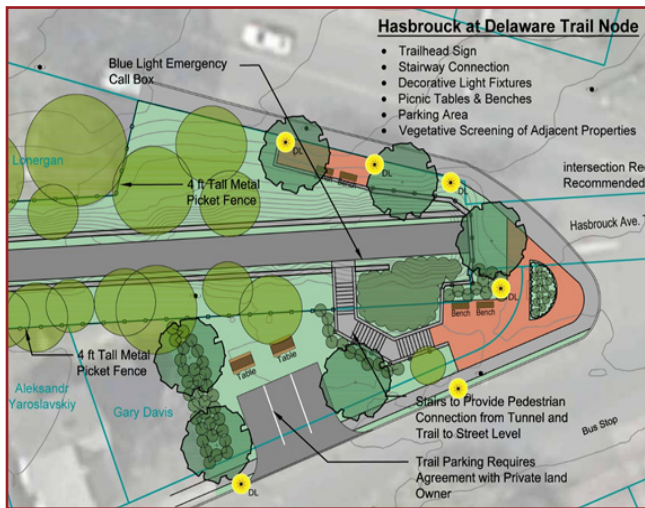


TMSC's Wastewater Treatment Plant

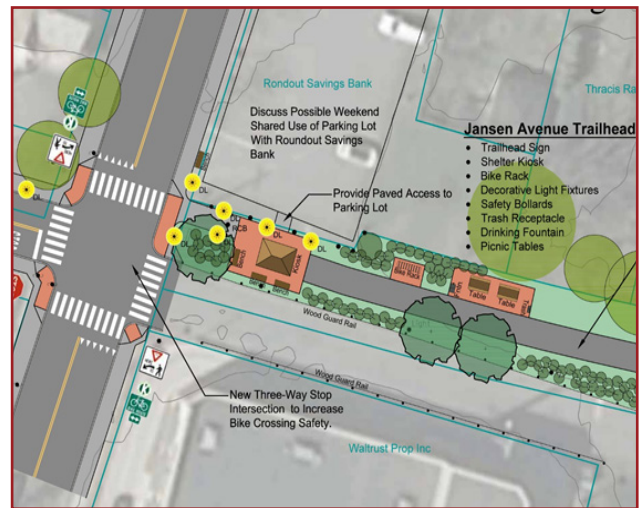
This quarter, KC completed the **Wastewater Treatment Plant Bar Screen** project for the Town of Wallkill, which installed two mechanically cleaned bar screens upstream of the raw sewage pumps to help manage and reduce the plant's clogging. KC also completed the **Surface Aeration System Replacement** project for the Tri-Municipal Sewer Commission, which installed a new diffused-air fine bubble aeration system that will provide more efficient oxygen delivery and increase the potential treatment capacity within the existing aeration basins.

COMMUNITY INVOLVEMENT

KC partnered with Saratoga Associates, the firm tasked with designing the **Kingston Point Rail Trail**, in providing land surveying, civil engineering, and regulatory compliance for the project. The Kingston Point Rail Trail will be part of the overall Kingston Greenline, a network of Kingston trails, and the Kingston Connectivity Project, the City of Kingston’s vision of a connected community. The Kingston Connectivity Project was funded through a grant awarded by the NYS Department of State. This grant has allowed for the design and construction of the Kingston Point Rail Trail.



Hasbrouck at Delaware Trail Node Design



Jansen Avenue Trailhead Design

KC assisted the **Village of Wappingers Falls** in applying for grant funding from the New York State Environmental Facilities Corporation. The Village received the full allowable amounts of funding, which totaled \$8 million: \$5 million through the Clean Water State Revolving Fund (CWSRF) and \$3 million through the Drinking Water State Revolving Fund (DWSRF).



COMPANY EVENTS

KC BECOMES ISO 9001:2015 CERTIFIED!



KC has completed the process of becoming ISO 9001:2015 certified and implementing our own Quality Management System (QMS). ISO 9001 standards are general quality control standards that apply across all industries and allow a company to control and plan processes, provide and record resources, and train employees. This system allows a company to track their progress, milestones, and performance, allowing them to analyze the results and move towards becoming more effective, productive, and profitable. The main goals of ISO 9001 are to provide continuous improvement and better customer and employee satisfaction.

ISO 9001 standards allow for well-defined and documented procedures, improved consistency of output, constant measurement of quality, a decrease of defect rates, identification of obsolete or inefficient practices and the subsequent update of them, and detailed instructions for all employees to follow.

AWARDED PROJECTS 



**KC IS AWARDED CONTRACT WITH THE
NEW YORK STATE DEPARTMENT OF
TRANSPORTATION**

**D900034 Region 8 Bridge Replacements
(Ulster County)**

The New York State Department of Transportation selected the ECCO III-KC Design-Build Team to design and replace the Route 209 bridge, located in the Town of Rochester over Rochester Creek, and the Route 28 bridge, located in the Town of Shandaken over Esopus Creek. Both bridges will be planned and constructed to minimize future roadway flooding and bridge abutment scour while also taking natural surroundings into consideration. The ECCO III-KC Design-Build Team received the highest technical and cost scores, for an overall score of 100.00.



Route 28 Bridge



Route 209 Bridge

AWARDED PROJECTS 

**KC IS AWARDED CONTRACT WITH THE
 NEW YORK STATE DEPARTMENT OF
 TRANSPORTATION**



**D031345-02 Scoping, Design Phases I-VI,
 and CSS for Rest Areas, Taste New York,
 and Welcome Center Sites, Statewide**

D031345 Regional Design Service Agreement (RDSA) Statewide was designated to the Stantec Team, of which KC is a DBE sub-consultant, earlier this year. D031345-02 is the second task assigned through this RDSA, and it includes scoping, design, and construction support services for various rest stops, welcome centers, and Taste NY sites. The Stantec Team was designated as the selected consultant for this task on September 15, 2016.

RDSA BY THE NUMBERS:

Contract Duration	60 months
Start Date	January 1, 2016
Estimated Highway Construction Cost	\$26,000,000
Estimated Bridge Construction Cost	\$14,000,000

AWARDED PROJECTS 



**KC IS AWARDED CONTRACT WITH THE
NEW YORK STATE DEPARTMENT OF
TRANSPORTATION**

**D031367-02 Highway Design Services for
Scoping for Shoreham Deep Water Port
Study, Nassau County**

D031367 Regional Design Service Agreement (RDSA) for Region 10 was designated to the AECOM Team, of which KC is a DBE sub-consultant, earlier this year. D031367-02 is the second task assigned through this RDSA, and it includes scoping for the Shoreham Deep Water Port Study in Nassau County. The AECOM Team was designated as the selected consultant for this task on July 7, 2016.

RDSA BY THE NUMBERS:

Contract Duration 60 months

Start Date January 4, 2016

Estimated Highway
Construction Cost \$25,000,000

Estimated Bridge
Construction Cost \$10,000,000

AWARDED PROJECTS 

**KC IS AWARDED CONTRACT WITH THE
NEW YORK STATE DEPARTMENT OF
TRANSPORTATION**

**D031367-04 Final Design Phases V-VI,
Wantagh State Parkway Resurfacing
from Ocean Parkway to Northern State
Parkway**



D031367 Regional Design Service Agreement (RDSA) for Region 10 was designated to the AECOM Team, of which KC is a DBE sub-consultant, earlier this year. D031367-04 is the fourth task assigned through this RDSA, and it includes surveying and mapping, detailed highway design, advanced detailed plans, and project management of the Wantagh State Parkway resurfacing. The AECOM Team was designated as the selected consultant for this task on July 26, 2016.

RDSA BY THE NUMBERS:

Contract Duration 60 months

Start Date January 4, 2016

Estimated Highway
Construction Cost \$25,000,000

Estimated Bridge
Construction Cost \$10,000,000

AWARDED PROJECTS 



**KC IS AWARDED CONTRACT WITH THE
NEW YORK STATE DEPARTMENT OF
TRANSPORTATION**

**D031453 Design Services Term
Agreement for Asbestos Assessment
and Remediation Management Services,
Regions 8, 10, and 11**

This agreement is for asbestos assessment and remediation management in Regions 8, 10, and 11. L.K. McLean Associates, P.C. (LKMA) submitted their team response to D031453 on July 25, 2016, and they were designated as the selected consultant on September 6, 2016. KC joined the team as LKMA’s DBE sub-consultant.

The required services include asbestos project screening for transportation capital projects involving buildings, bridges, and right-of-way construction work; asbestos project assessments, including identification, sampling, and quantification of impacted suspect asbestos-containing materials; asbestos project design, including payment item selection, special note preparation, and regulatory variance preparation and submittal; asbestos compliance project monitoring during abatement activities, including project documentation approval and maintenance, contractor regulatory and specification compliance, and air sampling; and asbestos regulatory certification training for in-house NYSDOT staff.

BY THE NUMBERS:

Contract Duration	36 months
Start Date	April 3, 2017
Estimated Highway Construction Cost	\$2,250,000

AWARDED PROJECTS 

**KC IS AWARDED CONTRACT WITH
ORANGE COUNTY**

**Professional Engineering Services for
Preparation of an Engineer’s Report for
Cromline Creek Pump Station**



KC submitted our proposal response for the Preparation of an Engineer’s Report for Cromline Creek Pump Station to Orange County on March 28, 2016, and was notified of our award of the project on July 7, 2016. This project is for all the professional services necessary to prepare an engineer’s report for Cromline Creek Pump Station to support Orange County in its application to the NYS Comptroller’s Office to obtain permission for the increase and improvement of the facilities.



ORANGE COUNTY
NEW YORK

**Request for Proposals to Provide Professional
Engineering Services for Preparation of an
Engineer’s Report for Cromline Creek Pump Station**






PREPARED BY:



**Engineering and
Land Surveying, P.C.**



facebook.com/kcepc
twitter.com/kcengineeringpc
KC Engineering and Land
Surveying, P.C.
www.kcepc.com

AWARDED PROJECTS 



**KC IS AWARDED CONTRACT WITH
ORANGE COUNTY**

**Design, Plan Preparation, and
Construction Oversight Services for
Various Orange County Bridges
RFP-DPW02-16**

KC submitted our proposal response for the Design, Plan Preparation, and Construction Oversight Services for Various Orange County Bridges to Orange County on May 20, 2016, and was notified of our award of the project on July 7, 2016. This project is for the design, preparation of bid documents, bidding, and construction inspection services needed to upgrade Orange County’s bridge infrastructure by rehabilitating and/or replacing those structures that are functionally and/or structurally deficient.

**ORANGE COUNTY
NEW YORK**

RFP-DPW02-16
Design, Plan
Preparation, &
Construction
Oversight Services
for Various Orange
County Bridges

PREPARED BY: **Engineering and Land Surveying, P.C.**

IN CONJUNCTION WITH: **Ecological Solutions, LLC** **DISTINCT ENGINEERING SOLUTIONS, INC.**


AWARDED PROJECTS

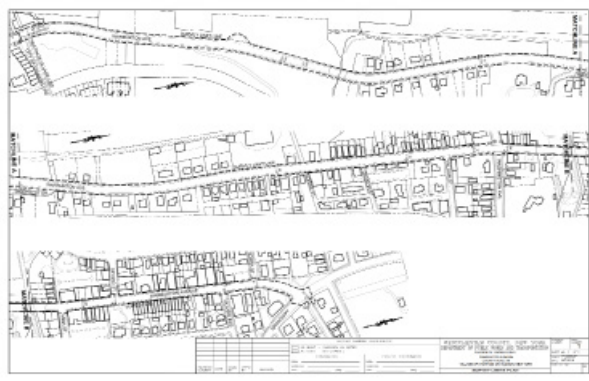
KC IS AWARDED CONTRACT WITH WESTCHESTER COUNTY








Warburton Avenue Topographic/Property Line Survey

KC submitted our proposal response for the Warburton Avenue Topographic/Property Line Survey project to Westchester County on June 28, 2016, and was notified of our award of the project in July 2016. This project is for the topographic and property line survey of Warburton Avenue, a 40'-wide two-lane curbed road in the Village of Hastings-on-Hudson, Westchester County, which began in September.

REQUEST FOR PROPOSAL FOR
WARBURTON AVENUE TOPOGRAPHIC/
PROPERTY LINE SURVEY 



PREPARED BY:
 **Engineering and
Land Surveying, P.C.** 

 [facebook.com/kcepc](https://www.facebook.com/kcepc)
 twitter.com/kcepc
 www.kcepc.com

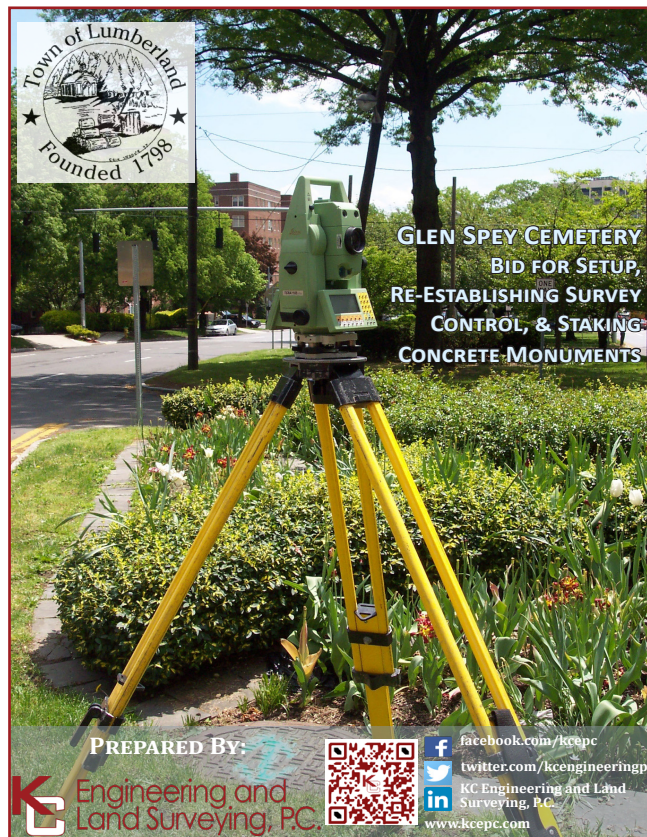
AWARDED PROJECTS 



KC IS AWARDED CONTRACT WITH THE TOWN OF LUMBERLAND

Glen Spey Cemetery Bid for Setup, Re-Establishing Survey Control, and Staking Concrete Monuments

KC submitted our proposal response for the Glen Spey Cemetery Bid for Setup, Re-Establishing Survey Control, and Staking Concrete Monuments in the Town of Lumberland on August 10, 2016, and was notified of our award of the project on August 15, 2016. This project is for the setup and re-establishment of survey control in the field, as well as the staking of 16 concrete monuments.



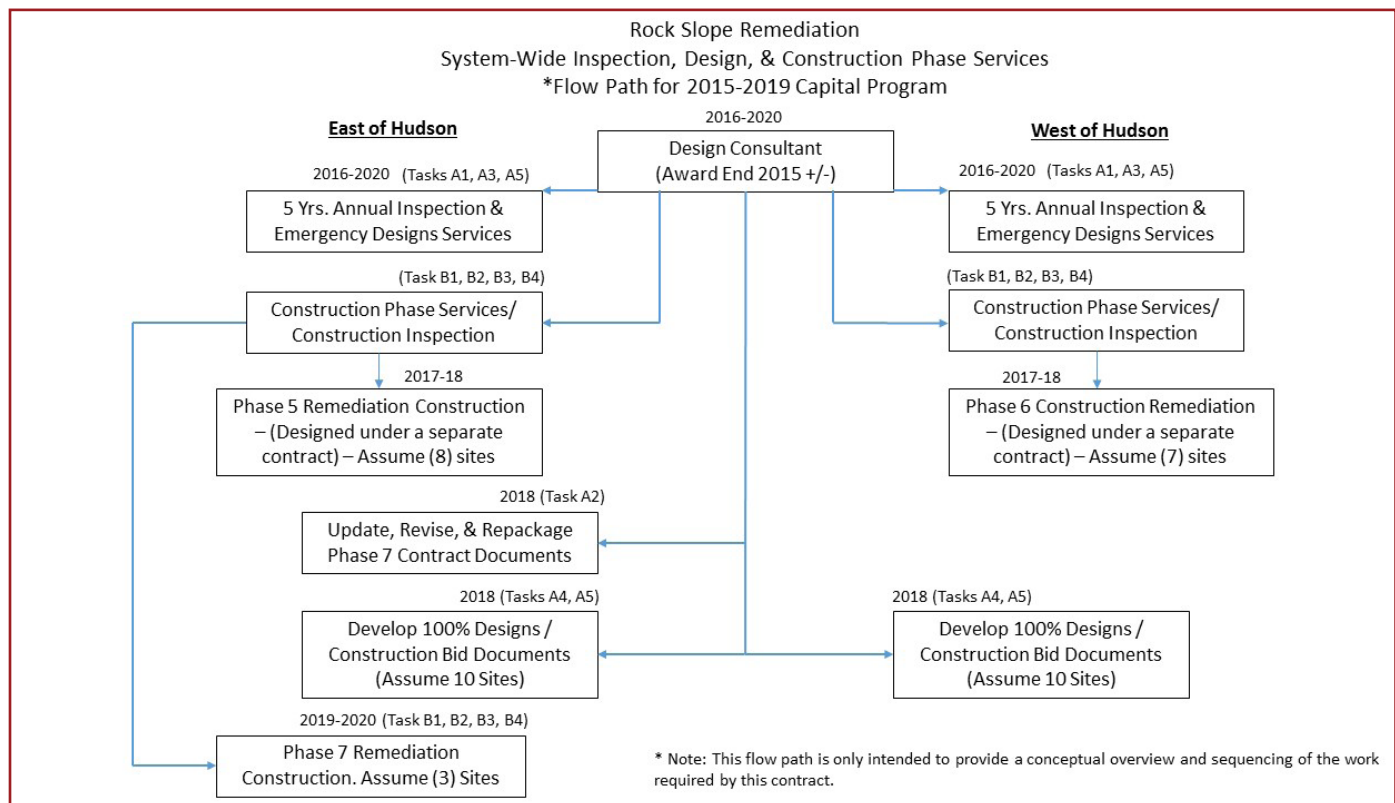
AWARDED PROJECTS 

KC IS AWARDED CONTRACT WITH METRO-NORTH RAILROAD

Rock Slope Remediation Agreement No. 67165



KC joined GeoDesign, Inc. for their submission to Metro-North Railroad for the Rock Slope Remediation project. The team submitted our proposal response on May 20, 2016, and was notified of our award of the project on July 8, 2016 after a successful interviewing process. This project is for yearly design and inspection services for the approximately 265 rock slope sites throughout Metro-North’s New York territory East and West of the Hudson River. There are approximately 113 rock slopes along the Hudson Line, 60 along the Harlem Line, 12 along the New Haven Line, and 80 along the Port Jervis Line. KC is providing GeoDesign with rock inspection, construction inspection, land surveying, and GIS services.



AWARDED PROJECTS **KC IS AWARDED CONTRACT WITH
THE METROPOLITAN TRANSPORTATION
AUTHORITY****Emergency Repairs of the Park Avenue
Viaduct at 118th Street Design-Build**

KC joined ECCO III Enterprises, Inc. for their submission to the MTA for the Emergency Repairs of the Park Avenue Viaduct at 118th Street Design-Build project. The ECCO III Design-Build Team was selected as the best value contractor on July 15, 2016, with KC's designs coming in as the clear best of those submitted. The Park Avenue Viaduct is a roadway in Manhattan that carries Park Avenue from East 40th Street to 46th Street around Grand Central Terminal and the MetLife Building, and then through the Helmsley Building. The Viaduct sustained structural damage due to a fire in May, and the temporary repairs needed to be redesigned into a more permanent solution.



AWARDED PROJECTS

KC IS AWARDED CONTRACT WITH THE DORMITORY AUTHORITY OF THE STATE OF NEW YORK



GOSR - Green Infrastructure Assessment and Implementation

KC joined Stantec Consulting, Inc. to provide surveying services for their submission to DASNY for the Green Infrastructure project, submitted on July 13, 2016. The Stantec Team was selected as the best value team on August 18, 2016. This project will include the planning and design of green infrastructure within the boundaries of six NY Rising Community Reconstruction Program (NYRCR) Planning Areas (Gravesend/Bensonhurst, Southeast Brooklyn Waterfront, Canarsie, Southern Brooklyn Peninsula, Rockaway West, and Idlewild Watershed). The project will provide rebuilding and revitalization assistance to the communities most impacted by Superstorm Sandy, Hurricane Irene, and Tropical Storm Lee. An assessment of storm water drainage will be undertaken, as well as the collection and analysis of geotechnical data. The project will also include the installation of selected green infrastructure components, primarily Right-of-Way Bioswales (ROWB).



Previous Bioswale Work by KC

COMPLETED PROPOSALS



DUTCHESS COUNTY WATER AND WASTEWATER

AUTHORITY:

Vanderburgh Cover Sewer Systems Professional Surveying Services:

This proposal is for professional surveying services, including boundary survey, topographic survey, structure location, outfall location, existing utility location, comparison of utility locations versus existing easements, property plat and description preparation, and easement plat and description preparation for the Vanderburgh Cove Sewer Systems in the Towns of Hyde Park and Rhinebeck, NY.

Construction Administration Services for the Water Connection from the Central Dutchess Water Transmission Line to the Dutchess County Airport:

This proposal is for construction administration services during the pre-construction, construction, and post-construction phases of the Water Connection from CDWTL to DC Airport project.

DASNY:

Green Infrastructure Assessment and Implementation:

This proposal is for the planning and design of green infrastructure within the boundaries of six NY Rising Community Reconstruction Program (NYRCR) Planning Areas (Gravesend/Bensonhurst, Southeast Brooklyn Waterfront, Canarsie, Southern Brooklyn Peninsula, Rockaway West, and Idlewild Watershed). KC joined Stantec's team for this submission.

Electric Vehicle Charging, Queens College:

This proposal is for the design of several electric vehicle charging stations at Queens College. KC joined Genesys's team for this submission.



COMPLETED PROPOSALS

NYS DEPARTMENT OF TRANSPORTATION:

D900036 Region 8 Bridge Replacement (Westchester County), RFQ Stage:

This design-build qualifications package is for three full bridge replacements of two bridges carrying NYS 987D over the Sawmill River and the bridge carrying East 3rd Street over the Hutchinson River and Parkway. KC joined ECCO's team as Lead Designer for this submission.



D031445 Long Island Expressway (I-495) Bus/HOV and ATDM Project:

This expression of interest is for preparing ADP plans, estimates, and PS&E packages for the construction of bus/HOV lane extensions and ATDM systems on the LIE. KC served as sub-consultant on this submission.

D031450 Design Services for Corrective and Preventive Maintenance of Retaining Walls, Region 11:

This expression of interest is for the inspection of NYSDOT-owned retaining walls in Region 11 and the design of repair and preventive maintenance details. KC served as sub-consultant on this submission.

D031452 Construction Inspection, Various Locations Bridge Steel Repairs Region 11:

This expression of interest is for inspection of the reconstruction of steel repairs in all NYC counties in Region 11. KC served as sub-consultant on this submission.

D031453 Design Services Term Agreement for Asbestos Assessment and Remediation Management Services, Regions 8, 10, and 11:

This expression of interest is for design highway services for asbestos assessment and remediation management. KC served as sub-consultant on this submission.

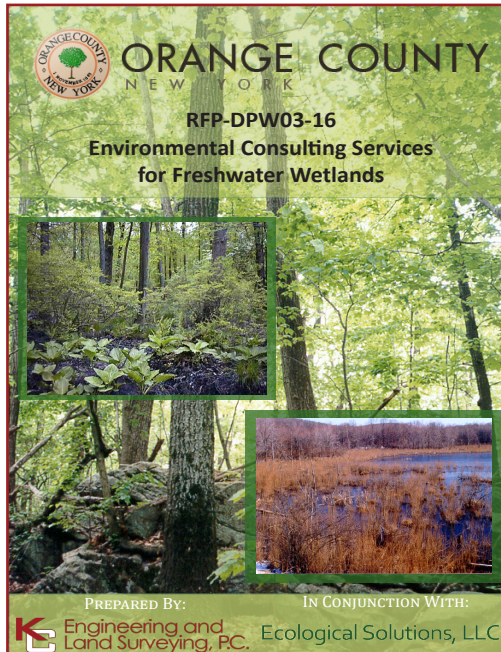
D031462 Regional Design Services Agreement, Region 11:

This expression of interest is for highway and bridge design services, scoping, and construction support services throughout Region 11. KC served as sub-consultant on this submission.

D031464 Regional Design Services Agreement, Region 8:

This expression of interest is for highway and bridge design services, scoping, and construction support services throughout Region 8. KC served as sub-consultant on this submission.

COMPLETED PROPOSALS



ORANGE COUNTY:

Environmental Consulting Services for Freshwater Wetlands:

This proposal is for environmental consulting services for various projects, including land surveying and GIS services.

Planning and Architectural/Engineering Services for County Veterans' Cemetery:

This proposal is for architectural/engineering services to develop a Master Plan for the cemetery, including potential projects such as pavilions, lighting, landscaping, and a plot locator. The selected consultant will provide support during the design and construction phases.

NYC ECONOMIC DEVELOPMENT CORPORATION:

Lower Concourse Infrastructure:

KC, as a sub-consultant to Stantec, submitted this proposal for the improvement of existing infrastructure for future development and enhancement of vehicle and pedestrian safety along Exterior Street within the Lower Concourse section of the Bronx. This corridor connects two key bridges over the Harlem River and serves as an important gateway to the borough.

METROPOLITAN TRANSPORTATION AUTHORITY:

Park Avenue Viaduct:

KC is providing ECCO III with design services for its design-build proposal submission to the MTA.

Authority-Wide As-Needed Engineering Services:

KC, as a sub-consultant to AECOM, submitted this proposal to provide the MTA with as-needed engineering services, including design, scoping, engineering inspection, BCOR, and value engineering, in various locations throughout New York City.



COMPLETED PROPOSALS

NYS OFFICE OF GENERAL SERVICES: ***SB489-Request for Qualifications for Land Surveying Services - Term Contract:***


This term contract is for providing the NYSOGS with surveying services. The assigned tasks will vary in size and scope, including topographic and utility surveys, horizontal and vertical controls, boundary surveys and/or property acquisition survey and maps, and the development of GIS geodatabases and datasets. Some of the tasks could include environmental and landscape architectural work as well as the rehabilitation of existing facilities.


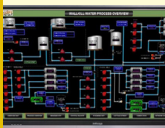







45429 Provide 0.5 MGD Wastewater Treatment Facility – Green Haven Correctional Facility, Stormville, NY:

This proposal is for providing engineering and technical services to secure regulatory approval and bid documents for the modification of the existing wastewater treatment plant and decommissioning of the existing lagoon infrastructure at Green Haven Correctional Facility.





Town Engineering Proposal for:



CIVIL ENGINEERING 	MUNICIPAL ENGINEERING 	STRUCTURAL ENGINEERING 
LAND DEVELOPMENT 	LAND SURVEYING 	CONSTRUCTION INSPECTION 
WATER SOLUTIONS 	GRANT ADMINISTRATION 	WASTEWATER TREATMENT 

PREPARED BY:

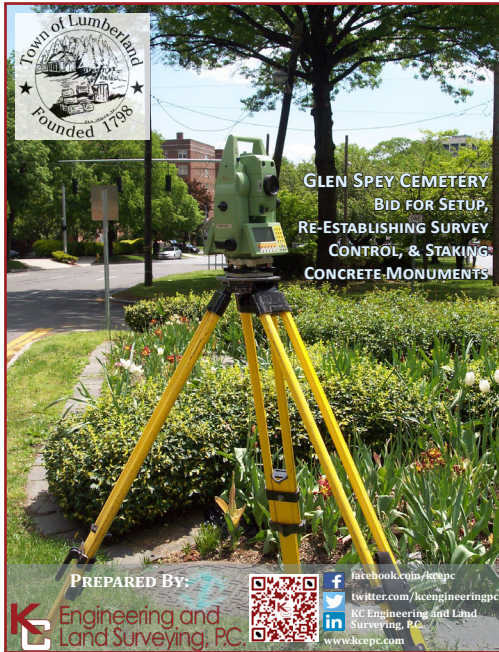



facebook.com/kcepc
twitter.com/kcengineeringpc
KC Engineering and Land Surveying, P.C.
www.kcepc.com

TOWN OF UNION VALE: ***Town Engineer:***

This proposal is for providing the Town of Union Vale with professional services for the remainder of 2016 and potentially through 2017 as well. Municipal engineering services to be provided include review of applications, assistance with building code as needed, grant applications, road specifications, environmental issues, MS4 work, and drainage, erosion, and sediment control assessments.

COMPLETED PROPOSALS



TOWN OF LUMBERLAND:

Glen Spey Cemetery Land Surveying Services:

This proposal is for setting up, re-establishing survey control, and staking concrete monument points in the new section of the Glen Spey Cemetery.

TOWN OF BLOOMING GROVE:

Critical Facilities Flood Mitigation and Relocation of Maintenance Garage:

This proposal is for providing the awarded architect/engineer of both projects with CAD support services, including converting existing drawings into AutoCAD files.

METRO-NORTH RAILROAD:

Feasibility Study Spuyten Duyvil to Ludlow Trail:

This proposal is for providing Metro-North Railroad with a study to determine the feasibility of a multi-use recreational trail, approximately three miles in length. The trail would run along Metro-North’s Hudson Line, from an area north of Spuyten Duyvil to Ludlow Station.



COMPLETED PROPOSALS

NYC DEPARTMENT OF DESIGN AND CONSTRUCTION:

Task 7, MED-594, Engineering Services for Scheduling and Delay Analysis Study for Installation of Distribution Mains in East 46th and 47th Streets between Madison and Lexington Avenues:

This proposal is for coordination and scheduling services for the Distribution Water Main project, including pre-construction scheduling, design review, coordination with all involved agencies, and an user cost analysis.



HWCRQ04M, Requirements Contracts for Resident Engineering Inspection Services, Mini RFP for HWP14RLM (Const. Contracts HWP14RLM & HWP14RTA), Citywide Complex Ped Ramps (Landmark and TA), Borough of Staten Island:

This proposal is for providing inspection services for the installation of complex pedestrian ramps adjacent to historic and/or landmark and transit facilities within the Borough of Staten Island.

HWCRQ04M, Requirements Contracts for Resident Engineering Inspection Services, Mini RFP for HWXS411, West 229th Street Step Street, Borough of The Bronx:

This proposal is for providing inspection services for the replacement of the West 229th Street Step Street from Heath Avenue to Kingsbridge Terrace in Kingsbridge Heights.

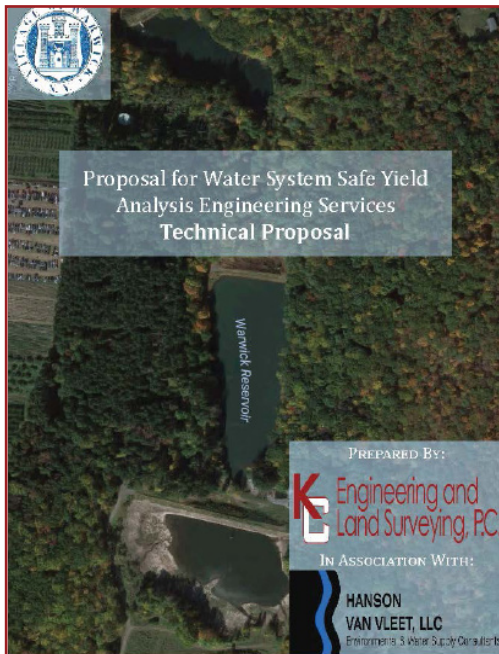
HWCRQ04M, Requirements Contracts for Resident Engineering Inspection Services, Mini RFP for P-1SAND01, Starlight Park – Pedestrian Bridges, Borough of The Bronx:

This proposal is for providing inspection services for the construction of Starlight Park - Phase II, Stage 1 between Westchester Avenue and East 172nd Street, including site remediation, wetlands, drainage, water main, curb and sidewalk, street lighting, traffic signal, retaining structures, and greenway.

HWCRQ04M, Requirements Contracts for Resident Engineering Inspection Services, Mini RFP for SER200249, Storm Sewer in Mason Street, Borough of Staten Island:

This proposal is for providing inspection services for the construction of storm sewers, sanitary sewers, and water mains in Mason Street in the Borough of Staten Island.

COMPLETED PROPOSALS



VILLAGE OF WARWICK:

Proposal for Water System Safe Yield Analysis Engineering Services:

This proposal is for conducting a safe yield analysis of the Village's water system, including a hydrogeologic review to evaluate the instantaneous and long-term safe yield of the Village's production wells.

Proposal for Review of SPDES Permit Renewal Application and Engineering Evaluation of the Rotating Biological Contactors:

This proposal is for reviewing the Village's SPDES Permit Renewal Application and conducting an evaluation of the rotating biological contactors at the Village's wastewater treatment plant.

US DEPARTMENT OF VETERANS AFFAIRS:

Metes and Bounds Boundary Survey:

KC, as a sub-consultant to Public Properties, LLC, submitted this proposal to provide a metes and bounds description of a government-owned residential property for the US Department of Veterans Affairs.

NASSAU COUNTY DEPARTMENT OF PUBLIC WORKS:

Bay Park Sewage Treatment Plant Professional Construction Management Services:

KC, as a sub-consultant to Nautilus, submitted this proposal to provide construction management services in connection with the Level 1 BNR improvements project at the Bay Park Sewage Treatment Plant in East Rockaway, NY.

